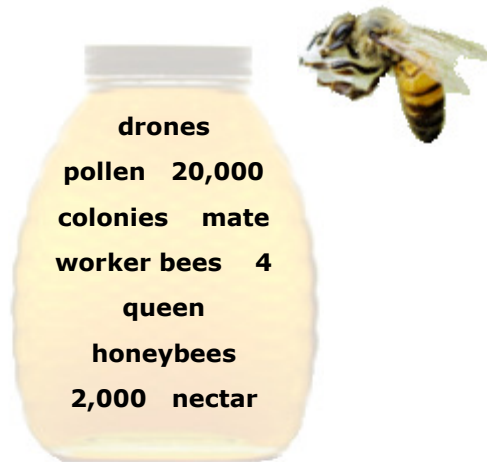


EXERCISE 1

Fill in the blanks.



1. There are over _____ species of bees. However, only _____ of these 20,000 species produce enough honey to count as _____.
2. Honeybees live in large _____ with a clear social order.
3. Each colony has one breeding adult female, called a _____.
4. A queen bee can lay up to _____ eggs a day.
5. The queen's eggs also produce a small number of males, or _____. These males _____ with the new queen. Most of the queen's eggs produce thousands upon thousands of female sterile _____.
6. The worker bees collect _____ and _____ from flowers and plants to make the honey which feeds the hive.

EXERCISE 2

Answer the questions.

1. State two English sayings about bees and their meanings.
 - a) _____

 - b) _____

2. What is "royal jelly"?
 - a) Honey for the drones
 - b) Honey for the kings and queens
 - c) Nourishing food for the young bees, queen bees and humans

3. How do bees communicate with one another?
 - a) By singing
 - b) By using their stings
 - c) By dancing and wagging their tails



Honeycomb © sammy-davisdog / flickr.com

Learning Activities

1. There are many different types of honey made in different parts of the world and they all taste different. Why is this so?

2. Ask students to bring in honey. Identify where they come from. Then compare their colour and taste. Research into the types of honey made in your area. From which flowers do the honeybees gather nectar?



Honeybee on aster © Muffet / flickr.com



Honeybee on lavender © Ryan Wick / flickr.com